

## Matrouschka's Magic

F.C. VAN TUINEN

A matrouschka consists of a series of dolls of diminishing size. It may be assumed that this symbol of Russian industrial art is generally known. New is the idea to devise a *chess* matrouschka in which the 'dolls' are studies that have a certain connection. The connection between these collected studies is that: 'Each subsequent position results from its predecessor by means of a decoy'.

I have managed to compose such a series of eight studies. The first position (1. Patrouschka) is a modified version of a position that occurred in a game I played in late 1986 in the club competition of S.C. Soest in the Netherlands.

The second position (2. Matrouschka) arises from a position by means of the decoy 1. ♖c6?. The following positions arise in an analogous manner.

For the *uneven* positions the stipulation is: White to play and draw.

For the *even* positions the stipulation is: Black to play and win

The *uneven* positions are the 'men' who have to try to draw. If they go astray they will lose! The *even* positions are the 'women' who can win. If they lose their way the result will be a draw!

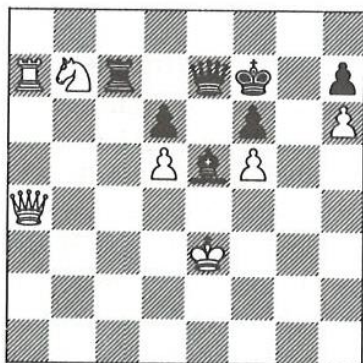
The names are:

1. Patrouschka (14)
2. Matrouschka (14)

- 3. Atrouschka (12)
- 4. Betrouschka (11)
- 5. Cetrouschka (10)
- 6. Detrouschka (9)
- 7. Etrouschka (8)
- 8. Eftrouschka (7)

7a. Natrouschka is a side-variation of position 7.

Between brackets the number of pieces is mentioned. Some of these positions have an equal number of pieces, but for a chess matrouschka this is hardly objectionable. Within a 'normal' matrouschka there is, I think, no room for twins, whereas *pa* will not even be mentioned. The fact that *Patrouscha* can also be read as *Patrouschka* (*Pat* is Dutch for 'stalemate', FCvT) and *Matrouschka* (*Mat* is Dutch for 'mate') is a nice incidental circumstance.



Position 1: Patrouschka

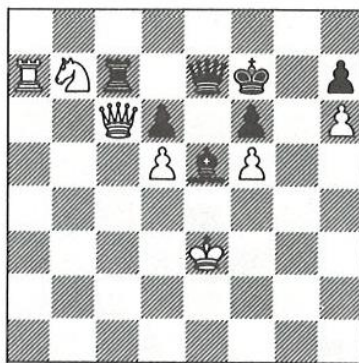
1. ♖d8

A) 1. ♗c6? Thus arises position 2.

B) 1. ♗b4? ♙f4 2. ♗f4 ♗e5 3. ♗g4 ♗e2 4. ♗g3 ♗d3 - +

C) 1. ♗g4? ♙d4 2. ♗d4 ♗e5 3. ♗d3 ♖c3 4. ♗d2 ♗e3 5. ♗d1 ♖c1 mate.

1... ♗d8 1... ♗f8? 2. ♗e6 +- ; 1... ♗g8? 2. ♗g4 ♗h8 3. ♗f7 ♗f7 4. ♖a8 +- 2. ♗a5 ♙d4 3. ♗d4 ♖a7 4. ♗d8 4. ♗a7 ♗e8 (4... ♗e7? 5. ♗e7 ♗e7 6. ♗c4 ♗d7 7. ♗b5 +-) 5. ♗h7 ♗b6 = (perpetual check) 4... ♖a4 5. ♗c3 ♖c4 = (The 'rambling rook' forces a draw). #

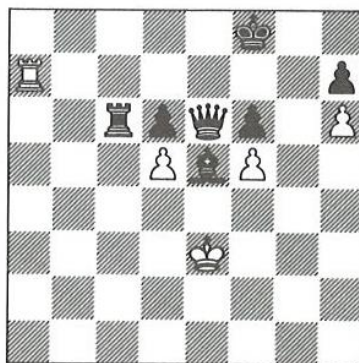


Position 2: Matrouschka

1... ♙f4

A) 1... ♖c6? 2. ♗d8 ♗f8 (2... ♗e8 3. ♗c6 (3. ♖e7? ♗d8 - +) 3... ♙f4 4. ♗f4 ♗e2 5. ♖a8 ♗f7 6. ♖a7 ♗e8 7. ♖e7 ♗e7 8. ♗e7 ♗e7 =) 3. ♗c6 (3. ♗e6 ♗e8 (3... ♗e6, leading to position 3) 4. ♖a8 ♗f7 5. dc6 d5 6. ♗d8 =) 3... ♗e8 (for 3... ♙f4 see 2... ♗e8 etc.) 4. ♖h7 ♗h5 5. ♖h8 ♗f7 6. ♗d8 ♗e7 7. ♗c6 ♗d7 8. ♖h7 ♗c8 9. ♗a7 ♗b8 =

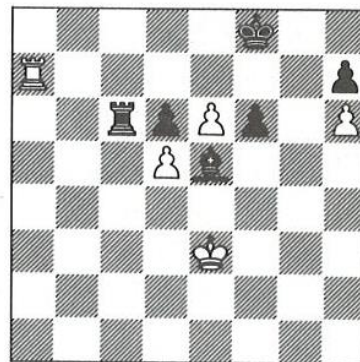
B) 1... ♙d4? 2. ♗d4 ♗e5 3. ♗c4 ♖c6 4. dc6 ♗e4 5. ♗b5 ♗f5 6. ♗b6 ♗f2 7. ♗a6 ♗e2 = 2. ♗f4 ♗e5 3. ♗g4 ♗e4 4. ♗g3 ♗e3 5. ♗g2 ♗g5 6. ♗f3 6. ♗h2 ♗h6 7. ♗g3 ♗g5 8. ♗h2 ♗f4 9. ♗g2 ♗g4 10. ♗h2 ♖c6 11. ♗d8 ♗e8 12. ♗c6 ♗f5 - + 6... ♗f5 7. ♗g3 7. ♗e3 ♖e7 8. ♗d2 ♗f4 9. ♗c2 ♖e2 10. ♗b1 ♗b4 - + 7... ♗g5 8. ♗f3 ♖c6 9. ♗c5 9. ♗d6 ♗g6 10. ♖g7 ♗h6 11. ♖g5 ♖c3 12. k- fg5 - + 9... ♗g6 10. ♖g7 ♗h6 11. ♖g5 ♖c5 12. ♖f5 ♗g6 - + #



Position 3: Atrouschka

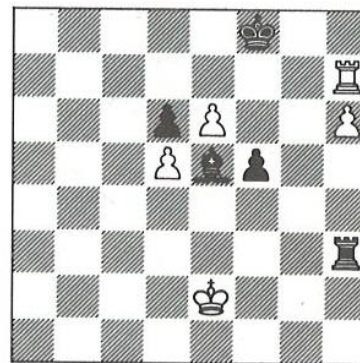
1. de6 1. fe6? leads to position 4. 1... d5 2. ♖h7 ♖c3 3. ♗e2 ♖h3 4. ♖f7 ♗e8 5. h7 ♙d6 6. ♖a7 ♙f8 7. ♖b7 7. ♖a8? ♗e7 8. ♖b8

d4 9. ♖a8 d3 10. ♗d1 (10. ♗d2 ♙h6 11. ♗c3 d2 12. ♗c2 ♖h1 13. h8 ♗ d1 ♗ - +) 10... ♙h6 - + 7... d4 8. ♗d2 d3 9. ♗d1 = #



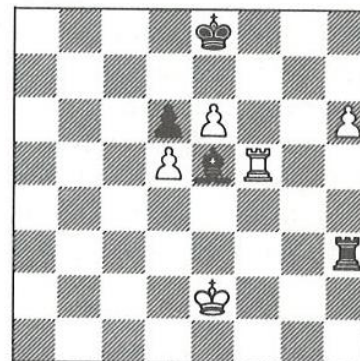
Position 4: Betrouschka

1... ♖c3 2. ♗e2 2. ♗e4 ♖c4 3. ♗f3 f5 4. ♖h7 ♖c3 5. k- ♖c5 - + 2... f5 3. ♖h7 ♖c5 3... ♖h3? and position 5 arises. 4. ♖f7 ♗e8 5. h7 ♖d5 6. ♖a7 ♙f6 7. ♖a8 ♗e7 8. h8 ♗ ♙h8 9. ♖h8 ♗e6 - + #



Position 5: Cetrouschka

1. ♖f7 ♗e8 1... ♗g8? 2. h7 ♗h8 (2... ♖h7 3. ♖h7 ♗h7 4. e7 +-) 3. e7 +- 2. h7 2. ♖f5? leading to position 6. 2... f4 3. ♖d7 f3 4. ♗e3 ♙f4 5. ♗f2 = #



Position 6: Detrouschka

1... ♖h6 2. ♖f1

A) 2. ♖f3 ♖h2 3. ♔e1 (3. ♔e3 ♖h4-+; 3. ♔f1 ♖d2-+) 3... ♖a2 4. ♖b3 ♖a5 5. ♖d3 ♖a4 6. ♖b3 ♖d4 7. ♖b5 ♖b4 8. ♖a5 ♔c3-+

B) 2. ♖f7 ♖h2 3. ♔e3 ♖h3 4. ♔e2 (4. ♔e4 ♖b4 5. ♔e3 (5. ♔f5 ♖f4 6. ♔g6 ♖f7-+) 5... ♖d4-+) 4... ♖b3 5. ♖a7 ♔d4 6. ♖a4 ♔c5 7. ♖a1 (7. ♖e4 ♖b4-+) 7... ♖e3 8. ♔d2 (8. ♔f1 ♖d3-+) 8... ♖e5-+ 2... ♖h4 3. ♖b1 ♔b2 3... ♖d4? gives position 7. 4. ♔d3 4. ♖f1 ♖d4 5. ♖f5 ♖e4 6. ♔d3 ♖e5-+ 4... ♖b4 5. ♔e2 ♔c3 6. ♖f1 ♔e5 7. ♖d1 ♖d4-+ #



Position 7: Etrouschka

1. ♖b5 1. ♖b8 ♔e7 2. ♖b7? (With 2. ♖b5 White can return to the main variation.) 2... ♔f6 3. ♖f7 ♔g6 4. ♔f3 ♔f6 (4... ♖d5? would lead to position 7a.) -+ 1... ♔e7 1... ♖c4 2. ♖b7 ♖c5 3. ♖b8 ♔e7 4. ♖b7 ♔f6 5. ♖f7 ♔g6 6. ♔f3 ♖d5 leads to position 7a (6... ♖c4 7. ♔e3 ♔f6 (After 7... ♖d4? 8. ♖f8 ♔f6 9. ♖f6 ♔f6 10. ♖d4 even wins for White) 8. ♖d7 ♔e5- 2. ♔e3 2. ♔f3? ♔f6 3. ♔e3 (3. ♖a5 ♖f4 4. ♔e3 ♔f5 5. ♖a8 ♔d4 6. ♔d3 ♔f6-+) 3... ♔f5 4. ♖b1 (4. ♖b2 ♖d5-+; 4. ♖b3 ♔f6-+; 4. ♖b6 ♖c4 5. ♔d3 ♖c3 6. ♔d2 ♔e4 7. ♖a6 ♔d5 8. ♖a5 ♔e6 9. ♖e5 ♔e5 10. ♔c3 ♔e4-+; 4. ♖b7 ♖d5-+; 4. ♖b8 ♔f6-+) 4... ♖d5 5. e7 gives rise to position 8. 2... ♔f6 3. ♔f3 ♔f5 3... ♖f4 4. ♔e3 ♔f5 5. ♖b7 ♔d4 6. ♔d3 ♔f6 7. ♖d7 ♖d4 8. ♔c2 ♖d5 9. e7 ♖e5 10. ♖d6-

4. ♖b7 ♔f6 5. ♖d7 ♖f4 6. ♔e3 ♖e4 7. ♔f3 ♔e5 8. ♖d6- #



Position 7a: Natrouschka

1. ♖f5 ♖d3 2. ♔e2 2. ♔e4? ♖d4 3. ♔f3 ♔f5 4. e7 ♖f4 5. ♔e3 (5. ♔g3 ♖g4-+) 5... ♖e4-+ 2... ♔f6 2... ♖d4 3. e7 ♖e4 4. ♔f3- 3. ♖f6 ♔f6 4. ♔d3 ♔e6 5. ♔e4- #



Position 8: Eftrouschka

1... ♔d4 1... ♔f4? 2. ♔f3 (2. ♔f2? ♖e5 3. ♖e1 (3. ♖b5 ♔e3 4. ♔f3 ♔c5-+) 3... ♔g3-+) 2... ♖d3 (2... ♖e5 3. ♖b5-) 3. ♔f2 ♖c3 4. ♖e1- 2. ♔f3 ♖e5 3. ♖d1 ♖e3 3... ♔c5? 4. ♖d5- 4. ♔f2 ♔e5 5. ♖d5 ♔f4-+ 5... ♔f6? 6. ♖c5-; 5... ♖c5? 6. ♔f3-